



LW40 LED WALL PACK



Full Wall Pack

Features & Benefits

110-277V AC

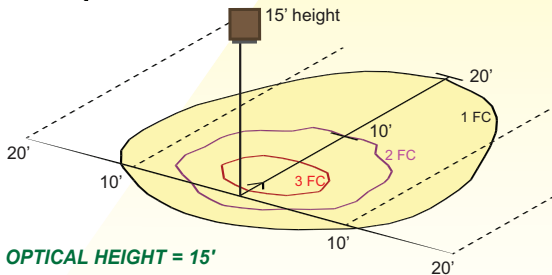
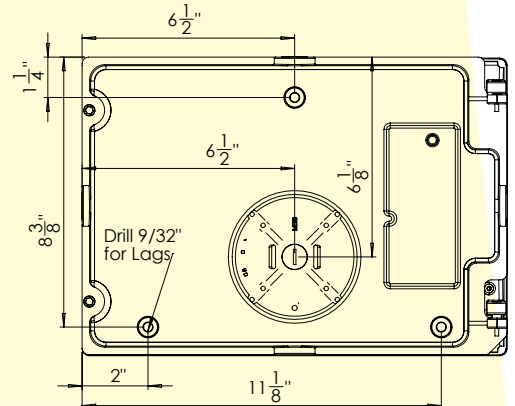
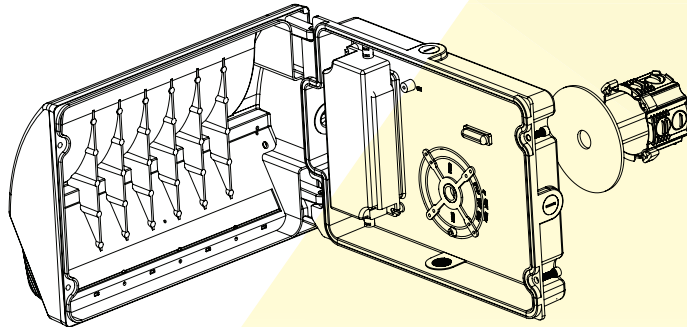
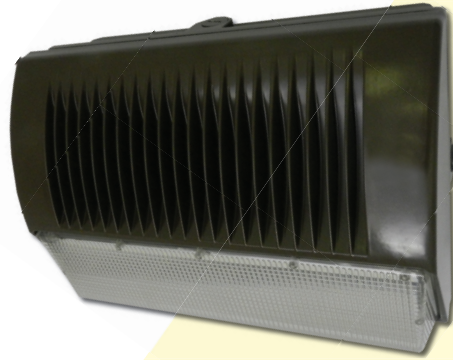
IP-RATING 65

ETL-LISTED

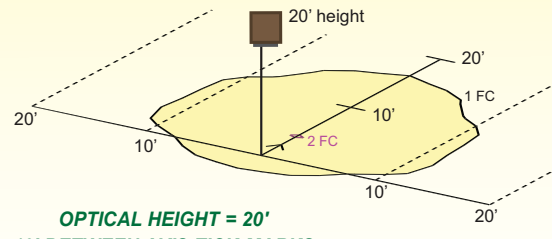
- LM80 tested
- Chromatically stable 5700K
- ETL-Listed; IP65 for "Wet Locations"
- Significantly longer life leads to reduced maintenance costs
- Traditional clamshell design for standard installation
- Heat sunked cast Aluminum housing
- Concealed fasteners
- Polycarbonate lens
- High temperature silicone seals
- Cold weather-resistant to -40°F
- Master pack comes in Pairs
- Built in level to speed up installation
- Weight: 6.75 lbs.



Chip- & Fade-Resistant Powder-Coated Finish in Dark Bronze



OPTICAL HEIGHT = 15'
10' BETWEEN AXIS TICK-MARKS
TILT = 0° FROM NADIR



OPTICAL HEIGHT = 20'
10' BETWEEN AXIS TICK-MARKS
TILT = 0° FROM NADIR

Part#	Input Wattage	Lumen Output	Lumens Per Watt	Replacement MH Lamp	Draw	Suggested CRI*	Mounting Height	Yearly Operating Cost**
LW40-BRZ-110-00	40.75-Watt	3,508	86.1	175-Watt	< .35 AMP @110V	82	12'-13'	\$16.06

* Color Rendering Index

** Based on 12 hours a day for 365 days

ETL listed for wet locations

