

# LUMA-HELIX 9W LED Spot Light



Introducing the 4 watt low-voltage Helix series LED spot/accent fixture as the latest in lighting technology now available for commercial and residential installations and replacement. Our Helix spotlight assures feature lighting and nighttime performance with a variety of color filters available to achieve dramatic effects. Free from environmentally hazardous materials and unmatched energy savings.

## Specifications

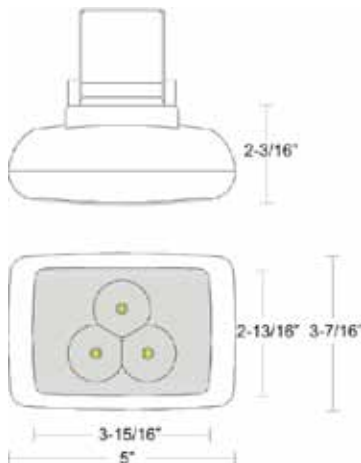
|                                    |               |
|------------------------------------|---------------|
| Total Lumens                       | 428.96        |
| Maximum Candela                    | 4474.41       |
| Input Power Watts                  | 8.85          |
| Input Power Amp                    | .74           |
| Color Rendering Index (CRI)        | 76.30         |
| Correlated Color Temperature (CCT) | 6203K         |
| Beam Angle @ 50%                   | 12°           |
| Beam Angle @ 100%                  | 15°           |
| Maximum Spread                     | 60'           |
| Rated Life                         | 50k Hours     |
| Warranty                           | 3 Yr. Limited |

## Features

- Choice of mounting options to meet a variety of architectural applications
- Clean look blends seamlessly with architectural elements
- Wet & dry zone lighting
- Adjustable 9" – 14" ABS Plastic mounting stake with adjustable 360°/180° bracket
- Crisp white, energy efficient light best for security cameras
- Significantly longer life leads to reduced maintenance costs
- Choice of mounting options to meet a variety of architectural & landscape applications
- Light weight compact design for easy installation
- Wide range of power supply with no special ballast or transformers required.
- ETL Certified

## Applications

- Commercial & Residential Security
- Landscaping
- Architectural Lighting & Entryways
- Boutiques
- Marinas & Docks
- Artwork & Galleries
- Signage & Walkways
- Maintenance Areas.
- Flagpoles



Up to 90% Energy Savings  
 \$3<sup>10</sup> Yearly Operating Cost Per Fixture

| Part Number | Color | Volt      | Price |
|-------------|-------|-----------|-------|
| LSSL7512    | White | 12 -24 DC |       |

# LUMA-HELIX 9W LED Spot Light

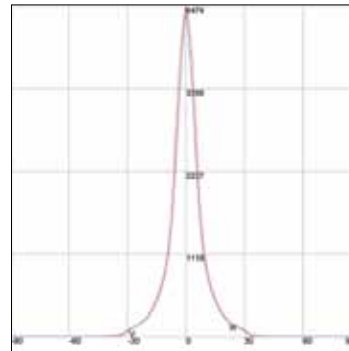
## AXIAL CANDELA

| DEG.  | HOR.    | DEG.  | VERT.   |
|-------|---------|-------|---------|
| 90    | 1.67    | 90    | 1.67    |
| 85    | 1.67    | 85    | 1.67    |
| 75    | 1.67    | 75    | 1.67    |
| 65    | 1.67    | 65    | 1.67    |
| 55    | 1.67    | 55    | 1.67    |
| 47.5  | 1.67    | 47.5  | 1.67    |
| 42.5  | 1.67    | 42.5  | 1.67    |
| 37.5  | 4.99    | 37.5  | 5.83    |
| 33    | 30.96   | 33    | 12.82   |
| 29    | 106.54  | 29    | 97.39   |
| 25.5  | 148.66  | 25.5  | 146     |
| 22.5  | 183.11  | 22.5  | 187.28  |
| 19.5  | 288.99  | 19.5  | 266.68  |
| 17    | 402.85  | 17    | 373.72  |
| 15    | 522.7   | 15    | 476.93  |
| 13    | 665.2   | 13    | 615.43  |
| 11    | 892.09  | 11    | 811.86  |
| 9     | 1257.65 | 9     | 1113.16 |
| 7     | 1867.25 | 7     | 1617.72 |
| 5     | 2877.37 | 5     | 2475.35 |
| 3     | 3821.57 | 3     | 3427.54 |
| 1     | 4307.69 | 1     | 4150.88 |
| 0     | 4474.41 | 0     | 4474.41 |
| -1    | 4307.69 | -1    | 4150.88 |
| -3    | 3821.57 | -3    | 3427.54 |
| -5    | 2877.37 | -5    | 2475.35 |
| -7    | 1867.25 | -7    | 1617.72 |
| -9    | 1257.65 | -9    | 1113.16 |
| -11   | 892.09  | -11   | 811.86  |
| -13   | 665.2   | -13   | 615.43  |
| -15   | 522.7   | -15   | 476.93  |
| -17   | 402.85  | -17   | 373.72  |
| -19.5 | 288.99  | -19.5 | 266.68  |
| -22.5 | 183.11  | -22.5 | 187.28  |
| -25.5 | 148.66  | -25.5 | 146     |
| -29   | 106.54  | -29   | 97.39   |
| -33   | 30.96   | -33   | 12.82   |
| -37.5 | 4.99    | -37.5 | 5.83    |
| -42.5 | 1.67    | -42.5 | 1.67    |
| -47.5 | 1.67    | -47.5 | 1.67    |
| -55   | 1.67    | -55   | 1.67    |
| -65   | 1.67    | -65   | 1.67    |
| -75   | 1.67    | -75   | 1.67    |
| -85   | 1.67    | -85   | 1.67    |
| -90   | 1.67    | -90   | 1.67    |

## CHARACTERISTICS

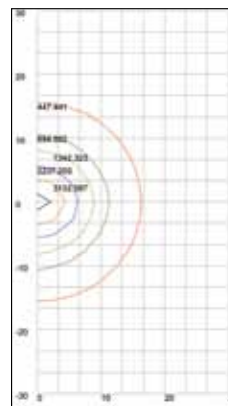
|                              |            |
|------------------------------|------------|
| NEMA Type                    | 3 H x 3 V  |
| Maximum Candela              | 4474.41    |
| Maximum Candela Angle        | 0H 0V      |
| Horizontal Beam Angle (50%)  | 12.5       |
| Vertical Beam Angle (50%)    | 11.1       |
| Horizontal Field Angle (10%) | 32.5       |
| Vertical Field Angle (10%)   | 31.1       |
| Lumens Per Lamp N.A.         | (absolute) |
| Total Lamp Lumens N.A.       | (absolute) |
| Beam Lumens                  | 102        |
| Beam Efficiency              | N.A.       |
| Field Lumens                 | 291        |
| Field Efficiency             | N.A.       |
| Spill Lumens                 | 138        |
| Luminaire Lumens             | 429        |
| Total Efficiency             | N.A.       |
| Total Luminaire Watts        | 8.85       |
| Ballast Factor               | 1.00       |

## AXIAL CANDELA DISPLAY



Maximum Candela = 4474.41  
 Located At  
 Horizontal Angle = 0,  
 Vertical Angle = 0  
 H - Horizontal Axial Candela  
 V - Vertical Axial Candela

## ISOCANDELA CURVES



Maximum Candela = 4474.41 Located At  
 Horizontal Angle = 0, Vertical Angle = 0  
 50% Maximum Candela = 2237.205  
 10% Maximum Candela = 447.441

|       | Center Beam FC | Beam Width   |
|-------|----------------|--------------|
| 0.3%  | 64.43 fc       | 1.6ft 1.8ft  |
| 1.6%  | 16.11 fc       | 3.2ft 3.7ft  |
| 25.0% | 7.16 fc        | 4.9ft 5.5ft  |
| 33.3% | 4.03 fc        | 6.5ft 7.3ft  |
| 41.7% | 2.58 fc        | 8.1ft 9.2ft  |
| 50.0% | 1.79 fc        | 9.7ft 11.0ft |

Vert. Spread: 11.1° Horiz. Spread: 12.5°