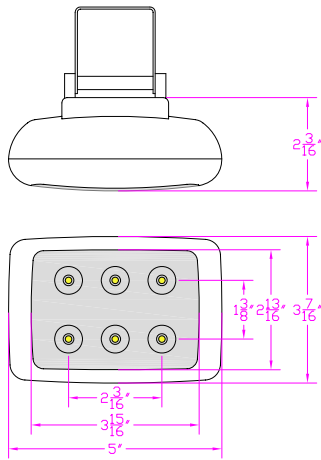


# LUMA-ANTHOS 6W LED Flood Light



Up to 90% Energy Savings  
\$2<sup>26</sup> Yearly Operating Cost Per Fixture

Part Number	Color	Volt	Price
LLAN50G	Green	120 -240 AC	
LLAN50B	Black	120 -240 AC	
LLAN5012B	Green	12 -28 DC	
LLAN5012G	Black	12 -28 DC	

Introducing the 6 watt Anthos series LED flood/security fixture as the latest in lighting technology now available for commercial and residential installations and replacement. Our Anthos floodlights assure efficient light distribution with a variety of color filters available to achieve dramatic effects. Free from environmentally hazardous materials and unmatched energy savings.

## Specifications

Total Lumens	348.28
Maximum Candela	683.39
Input Power Watts	6.46
Input Power Amp	.12
Color Rendering Index (CRI)	74.70
Correlated Color Temperature (CCT)	6617K
Beam Angle @ 50%	28.8°
Beam Angle @ 100%	40°
Maximum Spread	110'
Rated Life	50k Hours
Warranty	3 Yr. Limited

## Features

- Clean look blends seamlessly with architectural elements
- Wet & dry zone lighting
- Adjustable 9" – 14" ABS Plastic mounting stake with adjustable 360°/180° bracket
- Crisp white, energy efficient light best for security cameras
- Significantly longer life leads to reduced maintenance costs
- Choice of mounting options to meet a variety of architectural & landscape applications
- Light weight compact design for easy installation
- Wide range of power supply with no special ballast or transformers required
- ETL Certified

## Applications

- Commercial & Residential Security
- Architectural Lighting & Entryways
- Marinas & Docks
- Signage
- Landscaping
- Walkways
- Boutiques
- Artwork & Galleries
- Maintenance Areas
- Industrial Corridors
- Wash & Locker Rooms
- Storage Areas

# LUMA-ANTHOS 6W LED Flood Light

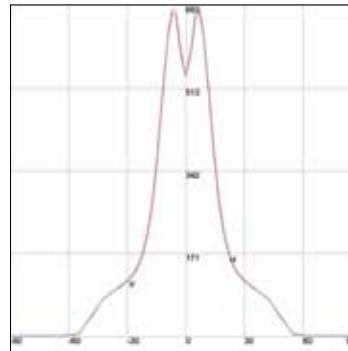
## AXIAL CANDELA

DEG.	HOR.	DEG.	VERT.
90	1.665	90	1.665
85	1.665	85	1.665
75	1.665	75	1.665
65	1.665	65	1.665
55	4.994	55	4.162
47.5	44.114	47.5	45.779
42.5	76.575	42.5	75.742
37.5	90.724	37.5	91.557
33	106.372	33	103.709
29	120.022	9	117.525
25.5	137.169	25.5	134.672
22.5	167.299	22.5	161.472
19.5	218.238	19.5	211.579
17	283.492	17	273.671
15	355.406	15	346.25
13	449.292	13	438.805
11	547.175	11	538.851
9	628.41	9	622.417
7	675.187	7	668.529
5	672.524	5	659.207
3	604.606	3	595.949
1	557.288	1	554.291
0	537.062	0	537.062
-1	557.288	-1	554.291
-3	604.606	-3	595.949
-5	672.524	-5	659.207
-7	675.187	-7	668.529
-9	628.41	-9	622.417
-11	547.175	-11	538.851
-13	449.292	-13	438.805
-15	355.406	-15	346.25
-17	283.492	-17	273.671
-19.5	218.238	-19.5	211.579
-22.5	167.299	-22.5	161.472
-25.5	137.169	-25.5	134.672
-29	120.022	-29	117.525
-33	106.372	-33	103.709
-37.5	90.724	-37.5	91.557
-42.5	76.575	-42.5	75.742
-47.5	44.114	-47.5	45.779
-55	4.994	-55	4.162
-65	1.665	-65	1.665
-75	1.665	-75	1.665
-85	1.665	-85	1.665
-90	1.665	-90	1.665

## CHARACTERISTICS

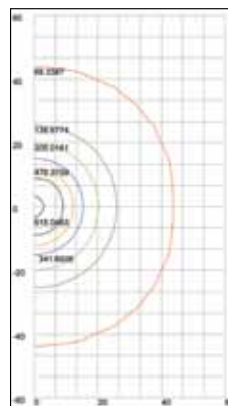
NEMA Type	5 H x 5 V
Maximum Candela	683.387
Maximum Candela Angle	-5H -5V
Horizontal Beam Angle (50%)	29.3
Vertical Beam Angle (50%)	28.8
Horizontal Field Angle (10%)	87.2
Vertical Field Angle (10%)	87.0
Lumens Per Lamp N.A.	(absolute)
Total Lamp Lumens N.A.	(absolute)
Beam Lumens	119
Beam Efficiency	N.A.
Field Lumens	310
Field Efficiency	N.A.
Spill Lumens	38
Luminaire Lumens	348
Total Efficiency	N.A.
Total Luminaire Watts	6.46
Ballast Factor	1.00

## AXIAL CANDELA DISPLAY



Maximum Candela = 683.387  
 Located At  
 Horizontal Angle = -5,  
 Vertical Angle = -5  
 H - Horizontal Axial Candela  
 V - Vertical Axial Candela

## ISOCANDELA CURVES



Maximum Candela = 683.387 Located At Horizontal  
 Angle = -5, Vertical Angle = -5  
 50% Maximum Candela = 341.6935  
 10% Maximum Candela = 68.3387