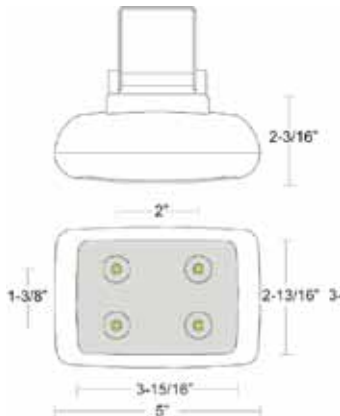


LUMA-ALTOS 4W LED Flood Light



Up to 90% Energy Savings
\$1⁶⁷ Yearly Operating Cost Per Fixture

Part Number	Color	Volt	Price
LMSEC30	White	120 ~240 AC	
LMSEC3012	White	12 ~24 DC	

Introducing the 4 watt Altos series LED flood/security fixture as the latest in lighting technology now available for commercial and residential installations and replacement. Our Altos floodlights assure efficient light distribution with a variety of color filters available to achieve dramatic effects. Free from environmentally hazardous materials and unmatched energy savings.

Specifications

Total Lumens	260.80
Maximum Candela	551.63
Input Power Watts	4.76
Input Power Amp	.09
Color Rendering Index (CRI)	73.90
Correlated Color Temperature (CCT)	6173K
Beam Angle @ 50%	28°
Beam Angle @ 100%	40°
Maximum Spread	110'
Rated Life	50k Hours
Warranty	3 Yr. Limited

Features

- Clean look blends seamlessly with architectural elements
- Wet & dry zone lighting
- Crisp white, energy efficient light best for security cameras
- Significantly longer life leads to reduced maintenance costs
- Choice of mounting options to meet a variety of architectural applications
- Light weight compact design for easy installation
- Wide range of power supply with no special ballast or transformers required.
- ETL Certified

Applications

- Commercial & Residential Security
- Artwork & Galleries
- Architectural Lighting & Entryways
- Maintenance Areas
- Marinas & Docks
- Industrial Corridors
- Signage & Landscaping
- Wash & Rooms
- Walkways & Boutiques
- Storage Areas

LUMA-ALTOS 4W LED Flood Light

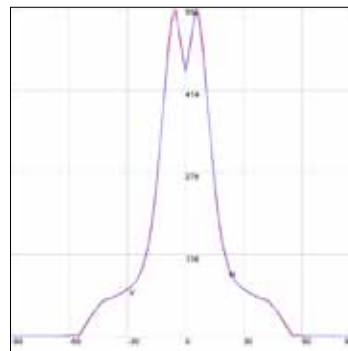
AXIAL CANDELA

DEG.	HOR.	DEG.	VERT.
90	1.67	90	1.67
85	1.67	85	1.67
75	1.67	75	1.67
65	1.67	65	1.67
55	4.16	55	1.67
47.5	41.62	47.5	39.95
42.5	59.1	42.5	62.43
37.5	66.59	37.5	65.75
33	74.24	33	73.25
29	82.56	29	81.73
25.5	93.22	25.5	93.06
22.5	111.53	22.5	114.03
19.5	147.32	19.5	150.99
17	194.1	17	199.43
15	248.04	15	254.69
13	325.28	13	327.27
11	410.01	11	406.34
9	487.25	9	478.59
7	540.19	7	529.69
5	550.17	5	544.35
3	500.23	3	506.39
1	462.09	1	465.75
0	444.99	0	444.99
-1	462.09	-1	465.75
-3	500.23	-3	506.39
-5	550.17	-5	544.35
-7	540.19	-7	529.69
-9	487.25	-9	478.59
-11	410.01	-11	406.34
-13	325.28	-13	327.27
-15	248.04	-15	254.69
-17	194.1	-17	199.43
-19.5	147.32	-19.5	150.99
-22.5	111.53	-22.5	114.03
-25.5	93.22	-25.5	93.06
-29	82.56	-29	81.73
-33	74.24	-33	73.25
-37.5	66.59	-37.5	65.75
-42.5	59.1	-42.5	62.43
-47.5	41.62	-47.5	39.95
-55	4.16	-55	1.67
-65	1.67	-65	1.67
-75	1.67	-75	1.67
-85	1.67	-85	1.67
-90	1.67	-90	1.67

CHARACTERISTICS

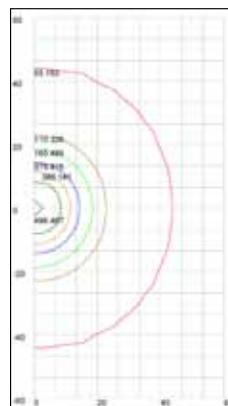
NEMA Type	5 H x 5 V
Maximum Candela	551.63
Maximum Candela Angle	-5H -1V
Horizontal Beam Angle (50%)	28.6
Vertical Beam Angle (50%)	27.3
Horizontal Field Angle (10%)	87.2
Vertical Field Angle (10%)	87.6
Lumens Per Lamp N.A.	(absolute)
Total Lamp Lumens N.A.	(absolute)
Beam Lumens	87
Beam Efficiency	N.A.
Field Lumens	226
Field Efficiency	N.A.
Spill Lumens	35
Luminaire Lumens	261
Total Efficiency	N.A.
Total Luminaire Watts	4.76
Ballast Factor	1.00

AXIAL CANDELA DISPLAY



Maximum Candela = 551.63
 Located At
 Horizontal Angle = -5,
 Vertical Angle = -1
 H - Horizontal Axial Candela
 V - Vertical Axial Candela

ISOCANDELA CURVES



Maximum Candela = 551.63 Located At
 Horizontal Angle = -5, Vertical Angle = -1
 50% Maximum Candela = 275.815
 10% Maximum Candela = 55.163